



ROTEM *delta*
ROTEM *platelet*

Redefining Bleeding Control

The complete ROTEM system



ROTEM *delta* analyzer and ROTEM *platelet* module

Whole blood testing with the complete ROTEM system, including the ROTEM *delta* analyzer and ROTEM *platelet* module, for a flexible solution in one system.



Coagulation status overview within 10 minutes

- Indicates need for factor, fibrinogen or platelet substitution
- Detection of platelet function and aggregation
- Hyperfibrinolysis
- Extent of dilutional coagulopathy
- Heparin and protamine dosage monitoring

Safe and simple

- Single-use reagents for fast and reliable results
- Automated pipette for standardized volumes
- Easy operation via touchscreen
- Step-by-step graphic instructions simplify test performance
- Integrated training program with expert case reports from and treatment algorithm references
- Integrated troubleshooting

Intuitive touchscreen interface

Put the pipette tip into the gently mixed citrated blood sample and confirm

ROTEM		INTEM		ROTEM S		ROTEM S	
ST: 15:48:21	RT: 04:01:46	ST: 15:50:07	RT: 00:01:08	ST: 15:50:40	RT: 00:00:26	ST: ---	RT: ---
CT: 52 s [0020 - 0078]		CT: * 29 s [0100 - 0240]		CT: ---		CT: ---	
CFT: ---		CFT: ---		CFT: ---		CFT: ---	
K: ---		K: ---		K: ---		K: ---	
A10: ---		A10: ---		A10: ---		A10: ---	

3814-04-17715-51-07 | v2.6.0 | User: admin | Temperature: 37.0°C | Pre | 1 | 2 | 3 | 4

ROTEM *delta* Hemostasis analyzer

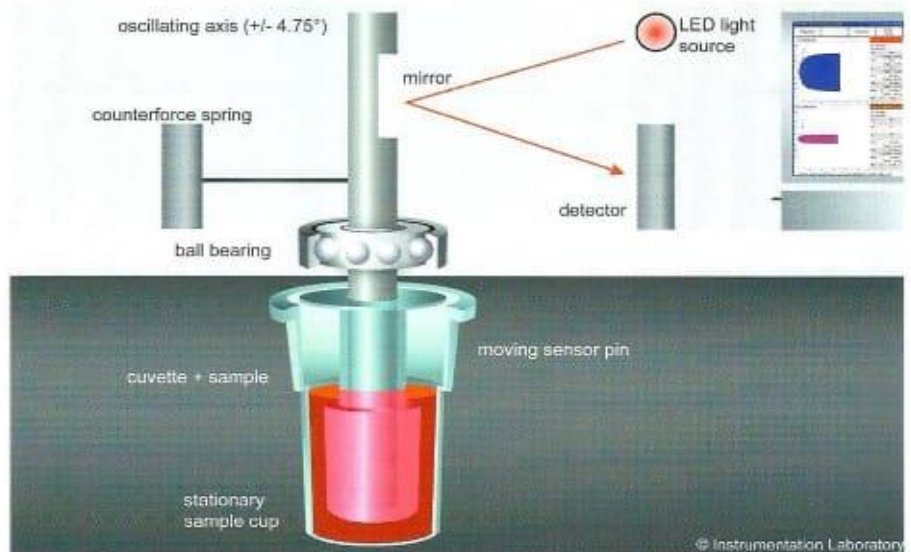


Quantitative and qualitative assessment

The ROTEM *delta* Hemostasis analyser measures clot elasticity of whole blood samples. It allows quantitative and qualitative assessment by measuring different parameters of the clot status. A comprehensive set of assays permits a differential diagnosis.

- Easy instrument handling with ball-bearing-stabilised technology of ROTEM thromboelastometry
- Differential diagnosis through the combination of up to 8 different assays
- Barcode scanner prevents the use of wrong or expired reagents
- Two levels of quality control for entire system, including reagent performance and user skills

Advanced vibration-resistant ROTEM technology



ROTEM *delta* comprehensive reagent portfolio

Liquid reagents	in-tem	r ex-tem	fib-tem	ap-tem/ t ap-tem	hep-tem
Single-use reagents	in-tem S	ex-tem S	fib-tem S	ap-tem S	hep-tem S
	Fast assessment of clot formation, fibrin polymerization and fibrinolysis via the intrinsic pathway	Fast assessment of clot formation, fibrin polymerisation and fibrinolysis via the extrinsic pathway	ROTEM analysis without platelets; qualitative assessment of fibrinogen status	<i>In vitro</i> fibrinolysis inhibition; assessment of the possible effect of antifibrinolytic drugs (compared to EXTEM)	Specific detection of heparin (compared to INTEM) via heparin neutralisation

ROTEM *platelet* module



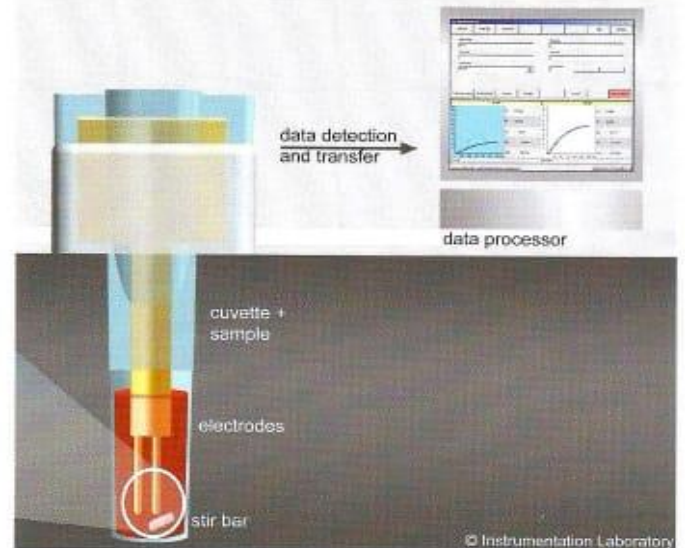
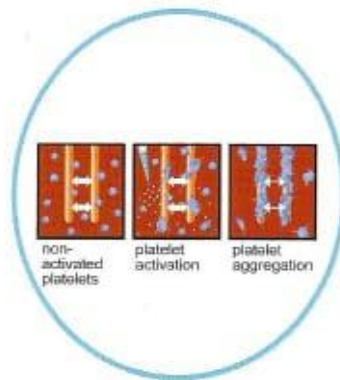
Platelet Aggregation

The ROTEM *platelet* module for the ROTEM *delta* measures platelet aggregation in whole blood samples using impedance aggregometry. This well-referenced methodology allows testing in bleeding situations with low hematocrits.

- Dedicated single-use cuvettes with electrodes
- Complete results available in 6 minutes
- 3 parameters:
 - Area Under the Curve (AUC) in Ohm*min
 - Amplitude at 6 min (A6) in Ohm
 - Maximum Slope (MS) of the aggregation graph in Ohm/min

ROTEM *platelet* module and ROTEM *delta* analyser can perform measurements simultaneously.

ROTEM *platelet* impedance aggregometry detection principle



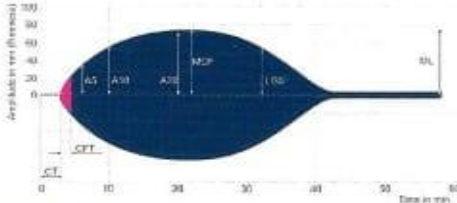
ROTEM *platelet* reagent portfolio

Single-use reagents	adp-tem	ara-tem	trap-tem
	(e.g., for the detection of ADP-receptor blockage (clopidogrel))	(e.g., for the detection of cyclooxygenase inhibitors (acetylsalicylic acid))	(e.g., for the detection of GP IIb/IIIa receptor antagonists (abciximab))

Fast therapeutic decisions



ROTEM delta TEMogram

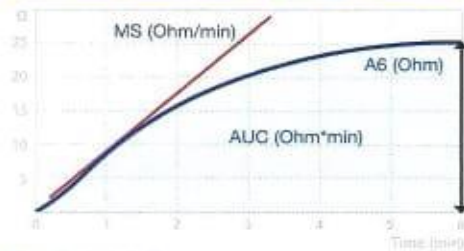


CT Clotting time
 CFT Clot formation time
 A5 Amplitude 5 min. after CT
 A10 Amplitude 10 min. after CT
 A20 Amplitude 20 min. after CT
 MCF Maximum clot firmness
 LI30 Lysis Index 30 min. after CT
 ML Maximum Lysis

Results from ROTEM analysis can guide optimal treatment and monitor treatment within minutes.

- First results are available within 5-10 minutes
- 6 channels provide differential diagnosis of coagulopathies
- Simplified interpretation of results via color-coded TEMograms/aggregation graphs and highlighted abnormal parameter results
- Easy therapeutic control using previous patient result as an overlay
- Fast interpretation by overlay of standard curves onto running results
- Comprehensive data transfer to HIS/LIS with ROTEM data solutions

ROTEM platelet aggregation curve



A6 Amplitude 6 min
 MS Maximum slope
 AUC Area under the curve

Simultaneous 6-channel results display

ROTEM® platelet	Multi-TEM	Screenshot	Standard overlay	Patient overlay	Help	Quit
1: 12345678						
2: 12345678						
3: 12345678						
4: 12345678						
5: 12345678						
6: 12345678						

2017-07-26T15:22:07 | v2.6.1 | User: admee | Temperature: 37.0°C | 2ms

ROTEM *delta* ROTEM *platelet*



Flexible solution for whole blood testing in one system

The complete ROTEM system, including ROTEM *delta* and ROTEM *platelet*, provides an overview about the coagulation status.

Thromboelastometry and platelet function results in minutes.

Werfen Corporate Headquarters

Plaza de Europa, 21-23
08908 L'Hospitalet de Llobregat
Barcelona, Spain
+34-93-4010101
werfen.com

Instrumentation Laboratory Headquarters

180 Hartwell Road
Bedford, MA 01730 USA
+1-781-861-0710
instrumentationlaboratory.com

Worldwide Locations

The Americas

Brazil
São Paulo
+55-11-4622-7878
br.werfen.com

Canada
Richmond Hill, ON
+1-800-552-2025 x6115
instrumentationlaboratory.com

Colombia
Bogotá
+57-15-221-052

Mexico
Mexico City
+52-55-5262-1760
mx.werfen.com

Uruguay
Montevideo
+5982-481-81-33

USA
Bedford, MA
+1-781-861-0710
instrumentationlaboratory.com

Asia-Pacific

Australia
Sydney
+61-02-9098-0200
au.werfen.com

China
Beijing
+86-10-59756055
Hong Kong
+852-2752-7773
Shanghai
+86-21-66308671
cn.werfen.com

India
New Delhi
+91-490-29-550
in.ilwerfen.com

Japan
Tokyo
+81-3-5419-1301
jp.werfen.com

Korea
Seoul
+82-1899-9217
kr.werfen.com

Thailand
Bangkok
+66-271-226-28/9

Europe

Austria
Vienna
+43-1-256-58-000
at.werfen.com

Belgium
Brussels
+32-2-7252052
benelux.werfen.com

Czech Republic
Prague
+420-246-090-931
cz.werfen.com

France
Paris
+33-182-30-86-00
fr.werfen.com

Germany
Munich
+49-89-909070
de.werfen.com

Hungary
Budapest
+36-1-882-73-10
hu.werfen.com

Italy
Milan
+39-02-25221
it.werfen.com

Lithuania
Kaunas
+370-37-313157
lt.werfen.com

The Netherlands
Breda
+31-76-5480100
benelux.werfen.com

Poland
Warsaw
+48-22-336-18-00

Portugal
Lisbon
+351-214247312
pt.werfen.com

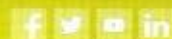
Russia
Moscow
+7-499-124-45-59
ru.ilwerfen.com

Spain
Barcelona
+34-902-20-30-90
es.werfen.com

UK
Warrington, England
+44-1925-810141
uk.werfen.com

For all other countries visit
international.werfen.com

The Instrumentation Laboratory logo, Tem and ROTEM are trademarks of Instrumentation Laboratory Company and/or one of its subsidiaries or parent companies, and may be registered in the United States Patent and Trademark Office and in other jurisdictions. All other product names, company names, marks, logos, and symbols are trademarks of their respective owners.
©2016 Instrumentation Laboratory. All rights reserved.



For more information, contact your local Werfen sales representative or distributor.



